

**Sigma 33 OOD Class Championship**  
**14<sup>th</sup> - 16<sup>th</sup> June 2019**

**SAILING INSTRUCTIONS**

**Organised by the Royal Dart Yacht Club, Devon, England** in conjunction with the  
Sigma 33 Offshore One Design [OOD] Class Association.

**1. RULES**

- 1.1. The regatta will be governed by the rules as defined in The Racing Rules of Sailing 2017-2020.
- 1.2. The RYA Racing Charter is to be observed.
- 1.3. Rules of the Sigma 33 Offshore One Design Class shall apply.
- 1.4. RRS Part 4 preamble is changed [see SI 4.3].  
Racing rule 32.2 is changed [see SI 8.3].  
Appendix A4 is changed [see SI 8.4].  
Racing rule 35 and Appendix A4 are changed [see SI 12.2].  
Racing rules 61.3 and 62.2 are changed. [see 13.2].  
Racing rule 60.1 is changed. [see 13.6].  
Racing rule 66 is changed [see 13.7].

**2. NOTICES TO COMPETITOR**

- 2.1. Notices to competitors will be posted on the official notice board located in the Cadet Room RDYC and on the RDYC website.

**3. CHANGES TO SAILING INSTRUCTIONS**

- 3.1. Any change to the sailing instructions will be posted before 0900 on the day it will take effect, except that any change to the schedule of races will be posted by 2000 on the day before it will take effect.

**4. SIGNALS MADE ASHORE**

- 4.1. Signals made ashore will be displayed at the signal mast RDYC.
- 4.2. When flag AP is displayed ashore, '1 minute' is replaced with 'not less than 90 minutes' in the race signal AP.
- 4.3. When flag Y is displayed ashore, rule 40 applies at all times while afloat. This changes the Part 4 preamble.

**5. SCHEDULE OF RACES**

- 5.1. Racing Schedule

	Friday 14 <sup>th</sup> June	Saturday 15 <sup>th</sup> June	Sunday 16 <sup>th</sup> June
HW Dartmouth	1652	1743	1831
1 <sup>st</sup> warning	1025	1025	1025

- 5.2. The event will consist of a maximum of 9 races.
- 5.3. There may be up to four races per day.
- 5.4. To alert boats that a race or sequence of races will begin soon, an orange flag will be displayed with one sound for at least four minutes before a warning signal is displayed.
- 5.5. On the last day of the regatta no warning signal will be made after 1300.

## 6. THE COURSES

6.1. The courses to be sailed will be a mixture of Windward-Leeward and one Round the Bay race using fixed or laid marks. In the latter case, the Committee Boat will display IC Flag B and the course to be sailed will be notified to boats via VHF.

### 6.2. Windward Leeward Course

No. of Laps: Indicated on Committee Boat.

The time limit shall be 2 hours. If one boat finishes within 2 hours, then the time limit is extended to 2.5 hours for subsequent finishers.

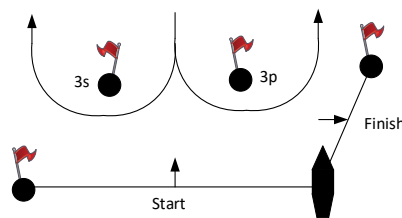
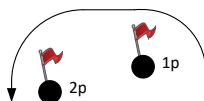
Start: Between Committee Boat and Distance Mark

Lap : Start to Mark 1p – 2p – 3s/3p

Repeat for designated number of laps.

Finish: on completion of final lap, having passed Mark 3p, cross Finish Line.

If one of the gate marks 3s or 3p is lost, then the remaining mark shall be left to port.



No later than the warning signal, the Committee Boat will display the approximate compass bearing of the first leg, and the number of laps to be sailed.

Courses may be shortened; Rule 32.2 is changed to allow the Committee boat to signal a shortened course before the first boat reaches the leeward mark, and boats should then sail to the finish mark after rounding that mark. This changes rule 32.

### 6.3. Round the Bay Race

Start	Course Marks	Finish	Time Limit
Between Committee Boat and Start ODM 'Bravo'.	As indicated on course boards on the side of the Committee Boat.	Between Committee Boat and Finish ODM situated approximately 100m beyond the last mark displayed on the Committee Boat.	<b>3 hours.</b> <b>Extension to 3.5 hours for subsequent finishers.</b>

No later than the warning signal, the Committee Boat will display the mark sequence and may broadcast it on VHF.

No later than the warning signal, the Committee Boat will display the approximate compass bearing of the first leg, and the number of laps to be sailed.

The course may be shortened at any mark.

## 7. MARKS

7.1. Racing in Start Bay	Orange Cylindrical Buoy
Mark 1p	Black Cylindrical Buoy
Mark 2p	Orange Dumpy Buoy
Mark 3s	Orange Tetrahedral Buoy
Mark 3p	Orange Tetrahedral Buoy
Port end Start Mark	Bravo mast
Finish ODM	Blue Tetrahedral Buoy
The Committee boat will be OPUS [a 9.8m Catamaran]	

7.2. Round the Bay Race  
See Appendix A

## 8. THE START

- 8.1. Races will be started by using rule 26 with the warning signal given 5 minutes before the starting signal.
- 8.2. The starting line will be between a staff displaying an orange flag on the Committee Boat at the starboard end and the mast displaying an Orange Flag on 'Bravo', a Motor launch..
- 8.3. Should Flag Z be used as a starting penalty, the penalty shall be an additional 5 mins added to the boats' elapsed time, unless disproportionate advantage is gained. Boats do not need to re-cross the line. This changes rule 30.2
- 8.4. A boat starting later than 5 minutes after her starting signal will be scored Did Not Start. This changes rule A4.

## 9. CHANGE OF THE NEXT LEG OF THE COURSE

- 9.1. To change the next leg of the course, the race committee will move the original mark (or the finishing line) to a new position and announce the change on VHF radio, but not necessarily showing signals as per RRS 33.

## 10. THE FINISH

- 10.1. The finishing line will be between a staff on the Committee boat displaying an orange flag on the finishing mark at the starboard end and the port-end finishing mark.

## 11. PENALTY SYSTEM

- 11.1. The Two Turns Penalty as permitted and described in rules 44.1 and 44.2 applies,

## 12. TIME LIMITS

- 12.1. Time limits are specified under Courses.
- 12.2. Boats failing to finish within the time limit, or its extension, will be scored Did Not Finish. This changes rules 35 and A4.

## 13. PROTESTS AND REQUESTS FOR REDRESS

- 13.1. Protest forms are available at the race office. Protests shall be delivered there within the protest time limit.

- 13.2. The protest time limit is 2 hours after the last boat has finished the last race of the day. The same time limit applies to protests by the race committee about incidents they observe in the racing area and to requests for redress. This changes rules 61.3 and 62.2.
- 13.3. Notices will be posted within 30 mins of the protest time limit to inform competitors of hearings in which they are parties or named as witnesses. Hearings will be held in the jury room, located at RDYC, as soon as possible after completion of the last race.
- 13.4. Notices of protests by the race committee will be posted to inform boats under rule 61.1(b).
- 13.5. A list of boats that, under instruction 14.3, have acknowledged breaking rule 42 or have been disqualified by the protest committee will be posted before the protest time limit.
- 13.6. Breaches of instructions 15, 17, 19, 20, 21 will not be grounds for a protest by a boat. This changes rule 60.1(a). Penalties for these breaches may be less than disqualification if the protest committee so decides.
- 13.7. On the last day of the regatta a request for reopening a hearing shall be delivered:  
(a) Within the protest time limit if the party requesting reopening was informed of the decision on the previous day;  
(b) No later than 30 mins after the party requesting reopening was informed of the decision on that day.  
This changes rule 66.

#### **14. SCORING**

- 14.1. Three race scores are required to be completed to constitute a series.
- 14.2. When fewer than six race scores have been completed, a boat's series score will be the total of her race scores. When 6 or more races have been completed, a boat's score will be the total of her race scores excluding her worst score.
- 14.3. After completion of sailing on Saturday 15th June, Gold and Silver Fleets may be identified.

#### **15. SAFETY REGULATIONS**

- 15.1. A boat that retires from a race shall notify the race committee as soon as possible.

#### **16. REPLACEMENT OF CREW OR EQUIPMENT**

- 16.1. Substitution of competitors will not be allowed without prior written approval of the race committee.
- 16.2. Substitution of damaged or lost equipment will not be allowed unless approved by the race committee. Requests for substitution shall be made to the committee at the first reasonable opportunity.

#### **17. EQUIPMENT AND MEASUREMENT CHECKS**

- 17.1. A boat or equipment may be inspected at any time for compliance with the class rules and sailing instructions. On the water, a boat can be instructed by a race committee measurer to proceed immediately to a designated area for inspection.

#### **18. OFFICIAL BOATS**

- 18.1. Official boats will be marked with a club burgee.

#### **19. SUPPORT BOATS**

- 19.1. Team leaders, coaches and other support personnel shall stay outside areas where boats are racing from the time of the preparatory signal until all boats have finished or the race committee signals a postponement, general recall or abandonment.

## 20. HAUL-OUT RESTRICTIONS

- 20.1. Keel boats shall not be hauled out during the regatta except with and according to the terms of prior written permission of the race committee.

## 21. DIVING EQUIPMENT AND PLASTIC POOLS

- 21.1. Underwater breathing apparatus and plastic pools or their equivalent shall not be used around keel boats between the preparatory signal of the first race and the end of the regatta.

## 22. RADIO COMMUNICATION

- 22.1. A boat shall neither make radio transmissions while racing nor receive radio communications not available to all boats.
- 22.2. Race Instructions and possibly commentary may be made on VHF channel 37. Boats are recommended to monitor this channel at all times. Failure to receive these communications on VHF will not be grounds for redress. This restriction also applies to mobile telephones.

## 23. PRIZES

- 23.1. Prizes will be given as described in the NOR.

## 24. RISK STATEMENT

Rule 4 of the Racing Rules of Sailing states:

“The responsibility for a boat’s decision to participate in a race or to continue racing is hers alone.”

Sailing is by its nature an unpredictable sport and therefore inherently involves an element of risk. By taking part in the event each competitor acknowledges that:

- a) They are aware of the inherent element of risk involved in the sport and accept responsibility for the exposure of themselves, their crew and their boat to such inherent risk while taking part in the event:
- b) They are responsible for the safety of themselves, their crew, their boat and other property when afloat or ashore:
- c) They accept responsibility for any injury, damage or loss to the extent caused by their own actions or omissions:
- d) Their boat is in good order, equipped to sail in the event and they are fit to participate:
- e) The provision of a race management team and other officials and volunteers by the event organiser does not relieve them of their own responsibilities.
- f) Patrol boats and safety boats are not provided.
- g) It is their responsibility to familiarise themselves with any risks specific to this venue or this event drawn to their attention in any rules and information produced for the venue or event and to read the Safety Briefing in SI 26.

## 25. INSURANCE

- 25.1. Each participating boat shall be insured with valid third-party liability of £3m.

## 26. Safety Briefing

- 26.1. Competitors are reminded that rescue boats are not provided, therefore it is a condition of racing that all yachts shall carry a VHF radio and a means of returning to the river (i.e. an engine or support boat).

- 26.2. It is the responsibility of each yacht to ensure that crew are able to use key safety equipment (e.g. the VHF radio).
- 26.3. In the first instance, a yacht shall try to rectify a minor safety incident itself, without recourse to external help.
- 26.4. If the safety incident cannot be rectified immediately by the yacht itself, and always in the event of a man overboard, the yacht shall call for help, e.g. by radio Channel 37a.
- 26.5. All competitors are bound to render assistance on receipt of such a call.
- 26.6. If the victim yacht decides that help from another yacht is unlikely to rectify the situation, or help is not forthcoming, then the yacht shall escalate the situation by calling the Coastguard on Channel 16. A MAYDAY should be used if there is imminent danger to life. A Pan-Pan (urgency) call is appropriate to inform the coastguard of the problem and what you are doing about it, and will speed the response if you later issue a MAYDAY.  
In the event of a serious injury, it is strongly recommended that the Coastguard is called so that medical help can be coordinated as swiftly as possible.
- 26.7. The Race Officer will attempt to coordinate rescue by competing yachts. This is restricted to making the closest yachts aware of the incident on Channel 37a.
- 26.8. Normally, the Committee Boat will continue to run the race. Redress will be given to any competitors involved in a rescue. In the event of a major incident, the race should be abandoned.
- 26.9. In an emergency, unless instructed otherwise, the best access to the shore/ambulance is the inner visitors' pontoon at Darthaven. The Harbour Master has a reserved space here which is kept vacant. As an alternative, the Town Jetty can be used. DHNA river officers are on duty and can be contacted on Channel 11 to help with berthing.

## Appendix A: The Bay Race

### Marks Available

Name	Description	Latitude	Longitude	Committee Boat Designation
RDYC 1	Yellow with Number	50°19.1'N	03°34.5'W	1
RDYC 2	Yellow with Number	50°18.7'N	03°33.4'W	2
RDYC 3	Yellow with Number	50°19.0'N	03°32.5'W	3
RDYC 4	Yellow with Number	50°19.6'N	03°32.4'W	4
Homestone	Red port hand buoy	50°19.6'N	03°33.5'W	H
Castle Ledge	Green stbd hand buoy	50°20.0'N	03°33.1'W	L
Strete	Orange Dumpy or Tetrahedral	50°18.7'N	03°36.6'W	S
Tom	Orange Dumpy or Tetrahedral	50°18.2'N	03°35.0'W	T
Jerry	Orange Dumpy or Tetrahedral	50°17.7'N	03°33.0'W	J
Slapton Sands	Orange Dumpy or Tetrahedral	50°17.2'N	03°38.0'W	SS
Monument	Orange Dumpy or Tetrahedral	50°16.6'N	03°36.6'W	M
Torcross	Orange Dumpy or Tetrahedral	50°16.0'N	03°38.6'W	Tr
Diddle	Orange Dumpy or Tetrahedral	50°16.6'N	03°36.0'W	D
Skerries	Red port hand buoy	50°16.3'N	03°33.7'W	Sk
Beesands	Orange Dumpy or Tetrahedral	50°15.0'N	03°38.5'W	B
Cart	Orange Dumpy or Tetrahedral	50°15.1'N	03°36.6'W	C

The approximate position of these marks is shown in the diagram overleaf.

